



## Fall 2021 Mystery Quilt Class – Purple Passion

© 2021 Design by Lori Dickman – [QuiltingWithLori.com](http://QuiltingWithLori.com)  
Mystery Quilt Class – Oct. 25, 2021- 7PM (CST)

### STEP THREE– PIECED BORDERS

Here are the instructions for the Pieced Borders of the Fall 2021 Mystery Quilt Class (Purple Passion).  
Templates are included in separate PDF's.

The Fabrics you will need are as follows:

#### **Wall Quilt:**

Lights (8) 3.5” x 12.5” rectangles; (8) 3.5” x 6.5” rectangles (Or use 3.5” strips of fabric)

Mediums (4) 3.5” squares

Darks (12) 3.5” x 12.5” rectangles (Or use 3.5” strips of fabric)

**Wall Size Outer Border Strips:** (Before cutting your “Outer” Border strips, measure your quilt across the ‘center’ from edge to edge & use those center measurements when you cut your strips. Your quilt center size may be different than the measurements noted below, depending on your seam allowances & your finished quilt block sizes! This technique ensures your quilt top remains ‘square.’)

Darks: (2) 2.5” x 42.5” and (2) 2.5” x 46.5”

#### **Lap Quilt:**

Lights (16) 3.5” x 12.5” rectangles; (8) 3.5” x 6.5” rectangles (Or use 3.5” strips of fabric)

Mediums (4) 3.5” squares

Darks (20) 3.5” x 12.5” rectangles (Or use 3.5” strips of fabric)

**Lap Size Outer Border Strips:** (Before cutting your “Outer” Border strips, measure your quilt across the ‘center’ from edge to edge & use those center measurements when you cut your strips. Your quilt center size may be different than the measurements noted below, depending on your seam allowances & your finished quilt block sizes! This technique ensures your quilt top remains ‘square.’)

Darks: (2) 2.5” x 66.5” and (2) 2.5” x 70.5”

#### **Using Templates to Cut Fabric:** (Templates included in separate PDF's)

The “Large” Triangle Template needs to be taped together using the guidelines on the PDF. When it is taped, it should measure 12.5” at its longest point. **NOTE:** When printing PDF's, **ALWAYS** ensure your printer settings are at **100%** so your templates will print out in the correct size (Some printer defaults are ‘fit to page’ & that setting will NOT produce accurate-sized templates.)

**Wall Size Quilt:** Using the Large Triangle template (measures 3.5” widest point x 12.5” longest point), cut out (8) Light Triangles & (12) Dark Triangles.

Using the End-Piece Triangle template (measures 3.5” widest point x 6.5” longest point), cut (8) from Light triangles – **Cut (4) right side and Cut (4) of them Mirror Image or Reversed**

**Lap Size Quilt:** Using the Large Triangle template (measures 3.5” widest point x 12.5” longest point), cut out (16) Light Triangles & (20) Dark Triangles.

Using the End-Piece Triangle template (measures 3.5” widest point x 6.5” longest point), cut (8) from Light triangles - **Cut (4) right side and Cut (4) of them Mirror Image or Reversed**

Once you've cut out your fabrics using the Triangle template and the End-Piece Triangle template, then you are ready to begin piecing the (4) Border units together...

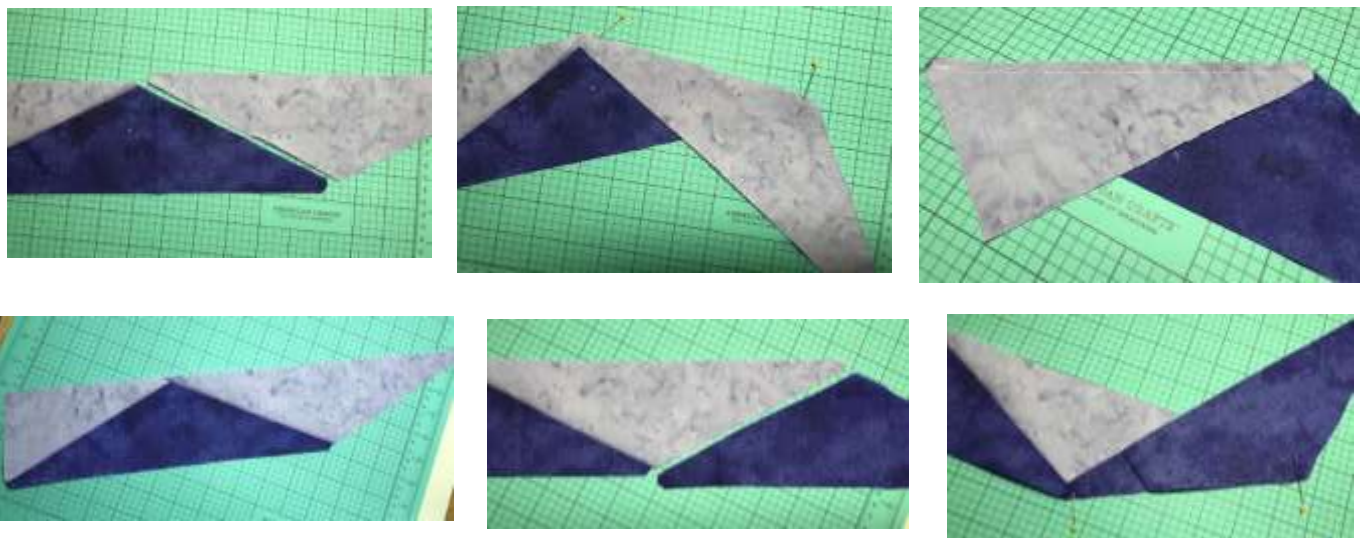


**Piecing the (4) Border Units:**

Start with a Light End-Piece Triangle unit and sew a Large (Dark) Triangle to it. (Study the photos below.) Place the two pieces RST and pin at each end; then sew the seam.



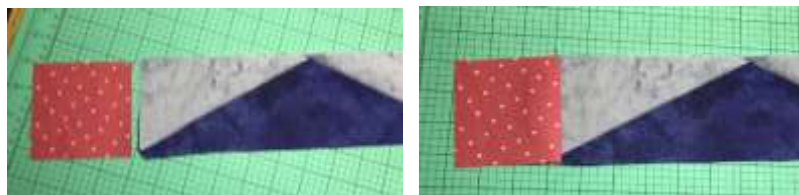
Next, add a Large Light Triangle RST to the Dark triangle; pin & sew the seam. You'll continue by adding a Dark, Light and Dark Triangle as you sew across this Border unit.



At the end of each Border unit, add a Light End-Piece Triangle to complete the Border unit row.

**Wall Quilt Size:** Each Border unit should have (3) Dark Triangles and (2) Light Triangles, and a Light End-Piece Triangle at **each** end of the unit.

**Lap Quilt Size:** Each Border unit should have (5) Dark Triangles and (4) Light Triangles, and a Light End-Piece Triangle at **each** end of the unit.



**Make a total of (4) Border units for the quilt.**

Now, add a 3.5" Medium value square to **each** end of just (2) of those Border units. (See photos here and next page...)



**Sew the Pieced Border units to the Quilt top:**

Start by sewing the (2) Short Pieced Border units to opposite sides of the Quilt top. Be sure to orient the rows so that the base of the Darker Triangles touches the quilt center. (See photos of quilt below.)



Then sew the (2) Longer Pieced Border units to the remaining sides of the Quilt top.



**Add the Outer Borders (Dark Value fabric) to the quilt top.** (The values recommended for the borders are just that...recommendations. You may decide to mix your color values up a bit! HAVE FUN!)

To be sure your quilt top remains 'square,' it is best to always measure your quilt top across the CENTER of the quilt to obtain the length to cut the corresponding border strips. **That measurement will be the correct measurement for your first set of shorter borders.**

Although the recommended Border strip 'width' measurements for the outer borders is 2.5" (which finishes to 2"), you may choose to have the outer borders on your quilt wider or narrower than 2"... this is your quilt and you may finish it as you please!

**First add the shorter outer borders to the quilt top.**

Then, **AGAIN**, measure across the center of the quilt which includes the measurement of those (2) borders already sewn to the quilt top. That is the measurement you should use to cut the last (2) longer borders. Sew those last (2) borders onto your quilt top.

---

Your Fall 2021 Mystery Quilt (Purple Passion) is now ready to be quilted, bound, and labeled!

Don't forget to get a photo of your pieced quilt top (doesn't have to be quilted; just pieced) to me by or before November 15, 2021 so I can include it in a video which will be placed out on my website and YouTube.

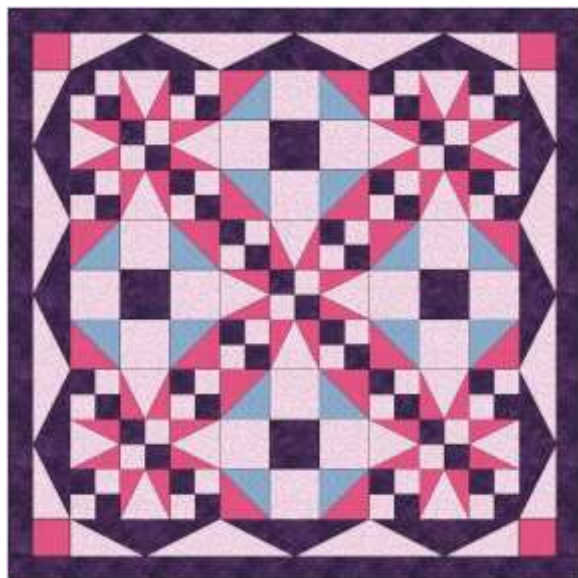
Lori Dickman

[QuiltingWithLori.com](http://QuiltingWithLori.com)

[quiltingwithlori@gmail.com](mailto:quiltingwithlori@gmail.com)

---

**Wall Quilt**



**Lap Quilt**

