



# Mystery Quilt Spring 2024

## Dutchman's Crossing – 90” x 90”

© 2024 Designs by Lori Dickman



### **Part Two – Block B:**

**NOTE: ZOOM LINK is listed BELOW for ALL four CLASSES**

If you don't already have your scrap stash cut, sorted, organized and ready to go to make beautiful quilts, be sure to watch/listen to my YouTube video tutorial here: [LINK](#) This link will take you to my YouTube channel and you'll find the tutorial is that top video listed on the channel right under my QWL Welcome banner.

If you do NOT have a scrap stash, NO WORRIES! All my patterns offer yardage to create the quilt. The yardage required for *Dutchman's Crossing* is listed below. PLUS, I have available some Resource Links on my website to give you some wonderful fabric options from which to choose: Check out the Strawberry Lemonade fabric line on [The Fat Quarter Shop](#); or the True Blue fabric line on [Connecting Threads](#).

Fabric requirements for 90” x 90” quilt size:

- Light fabric: 2.25 yards (mine will be creams)
- Medium 1 fabric: 2-3/8 yards (mine will be soft greens)
- Medium 2 fabric: 2-1/8 yards (mine will be soft roses)
- Dark fabric: 2-5/8 yards (mine will be blacks/charcoals)

**Bookmark this link on my website: “[Mystery Quilt Events](#)” as I will be posting more information out there for my Spring 2024 Mystery Quilt classes.**

Here is the Zoom Class schedule:

- MQ Session #1: Monday, March 11, 2024 at 7PM (CST – that is CHICAGO time, so “google” what time it is in your area based on Chicago time...**
- MQ Session #2: Monday, March 18, 2024 at 7PM (CST)**
- MQ Sessions #3: Monday, March 25, 2024 at 7PM (CST)**
- MQ Session #4: Monday, April 1, 2024 at 7PM (CST)**

**Lori Dickman**

\*\*\*\*\*

**Zoom Link:**

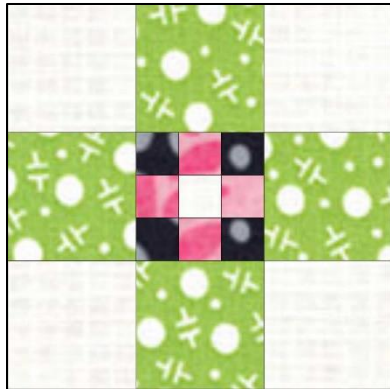
Lori Dickman is inviting you to a scheduled Zoom meeting. Join Zoom Meeting  
<https://us02web.zoom.us/j/88259508615?pwd=UzYwbHRudjRzRFNseXJBZzZqQjcwQT09>  
 Meeting ID: 882 5950 8615  
 Passcode: 298705

**Directions begin on the next page...**



**Block B:**

Note: Fabric colors indicated in the block image are only suggestions! Create your own unique quilt blocks; scrappy or themed! Use scrap fabrics or fabric lines that please you!



**Make 4 Block B:**

Size: 18.5" x 18.5" (unfinished)

**Pull from your scraps, OR cut from yardage:**

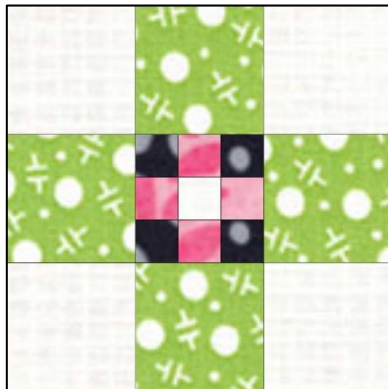
- (16) Medium #1 (Greens) 6.5" squares
- (16) Medium #2 (Pinks) 2.5" squares
- (4) Light (Whites) 2.5" squares
- (16) Light (Whites) 6.5" squares
- (16) Dark (Blacks) 2.5" squares

**For EACH Block B:**

Create 9-patch "Center" units for the block as shown in diagram at right using:  
For EACH block use (1) Light (Whites) 2.5" squares, (4) Med #2 (Pinks) 2.5" squares, (4) Darks (Blacks) 2.5" squares. **Create a total of (4) of these 9-patch "Center" units. Square up EACH unit to 6.5."**



**Lay out the block in 3 rows** using the squares you have just created, **as well as (4) Med #1 (Greens) 6.5" squares and (4) Lights (Whites) 6.5" squares** to create **EACH** block. See the diagram below...



**Row One:** 6.5" Light square; 6.5" Med 1 (Green) square; 6.5" Light square.

**Row Two:** 6.5" Med 1 (Green) square, 9-patch Corner unit; 6.5" Med 1 (Green) square.

**Row Three:** 6.5" Light square; 6.5" Med 1 (Green) square; 6.5" Light square.

**Make a total of (4) Block B's; Square up EACH block to 18.5".**

Directions continue on the Next page...



Spring 2024 Mystery Quilt  
Dutchman's Crossing  
© 2024 Design by Lori Dickman

**Now, let's lay out the quilt center using (5) Block A's and (4) Block B's.**

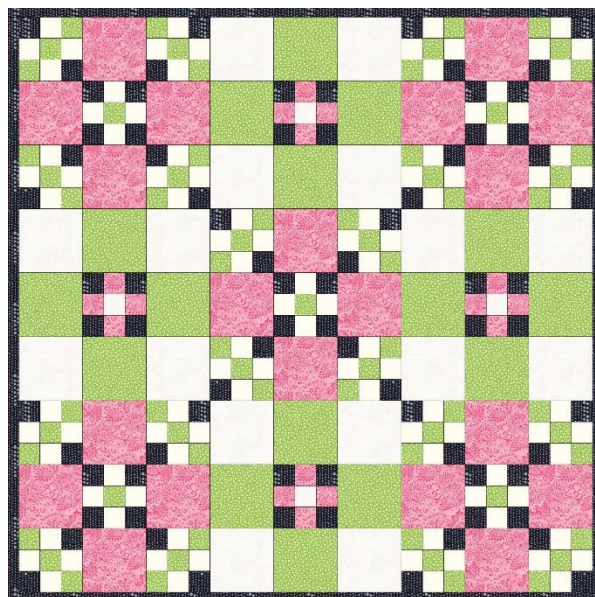
(Diagram at right shows black outer borders which will ONLY be used on the Queen size pattern; NOT for the Wall quilt pattern... see Important information noted below...)

**Row One:** Block A; Block B; Block A

**Row Two:** Block B; Block A; Block B

**Row Three:** Block A; Block B; Block A

(This pattern has to be one of the simplest & fastest quilt "centers" in a Mystery Quilt pattern that I've done in a LOOONG time!) 😊♥



### **IMPORTANT to NOTE:**

**If you are making the Queen size quilt (90" x 90") then you WILL BE Adding the Dark borders as shown in diagram above. (Instructions below...)**

**HOWEVER, if you are making the Wall size quilt, do NOT add the black borders at this point!! The Wall size pattern will be put together a bit differently! You will see that next week when we begin to work on borders!**

**Dark Border around 90" x 90" Quilt Center (ONLY for Queen size quilt):**

Cut (2) 1.5" x 54.5" strips (Dark)

Cut (2) 1.5" x 56.5 strips (Dark)

Sew the shorter Dark strips onto opposite sides of the quilt center; then sew the longer Dark strips onto the remaining two sides of the quilt center. Press SA (seam allowances) toward the dark strips.

**Next week, we will be working on some pieced border options that will be fun & interesting! I can't wait to show you!**

See you next week as we create Borders for the Mystery Quilt!

Lori Dickman; [quiltingwithlori@gmail.com](mailto:quiltingwithlori@gmail.com)

<https://QuiltingWithLori.com>